



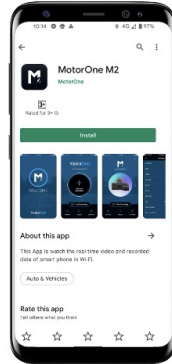
QUICK START GUIDE

for connecting a M2 Dash Camera via the MotorOne M2 App with Android device

Android instructions

Step 1

Search and download the MotorOne M2 App from the Play Store.

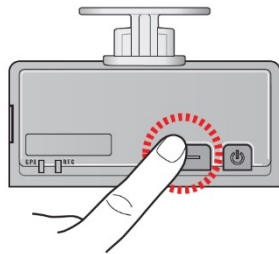


Step 2

Once installed, ensure the vehicle ignition is 'on' and have your engine running whilst proceeding this setup.

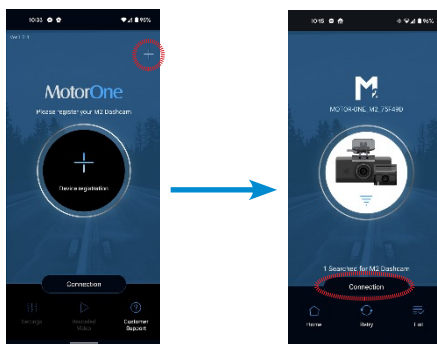
Step 3

Press the Wi-fi registration button on the M2 camera. You will hear a voice notification "standby for the registration of device".



Step 4

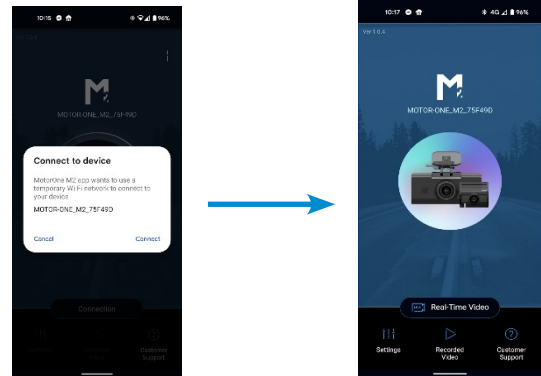
Click on the "+" icon in the top right corner to register your M2 camera to your app. Your phone will now begin to search for your M2 camera automatically. Once found, press "Connection" at the bottom of your phone's screen.



Step 5

Your phone will now automatically connect to your dash camera. You may see a pop up asking to "connect to device". Click 'connect'.

Once connection is complete, you can access, save or send footage and personalise the settings.



Troubleshooting:

If you are unable to connect with the auto Wi-Fi connection within the app, go into the phone settings then connect to the M2 Wi-Fi manually using password: **motoronedc**

- If you are having trouble connecting to the app, first check your location settings are enabled and then try re-starting the phone.

Important Notes:

If the SD card needs to be removed from or reinserted into the device, ensure dash camera is powered off first.

- Most essential settings are pre-set prior to, or during installation such as time zone and low voltage cut-off. Please do not change the camera settings. Refer to the installer for details.
- Your M2 dash camera will provide you with the following voice notifications:

Voice Notification	Explanation
Records in parking mode	Key off – camera will begin parking mode
Driving mode to start recording. Safe driving	Key on – camera will begin driving mode.
Impact occurred during parking	Impact has been sensed during parking mode. This could be an impact to the vehicle or from the vehicle's door being closed.
System shut down to protect the battery	Car parked. Camera will automatically turn off after voltage drops below set value.

Please refer to your User Manual for more in depth information.

FOR FURTHER SUPPORT CALL (08) 6267 5167 (AWST)

